



# How we are going to support disabled people



This is an Easy Read  
version of our Disability  
Action Plan



**Easy  
Read**

# Easy Read



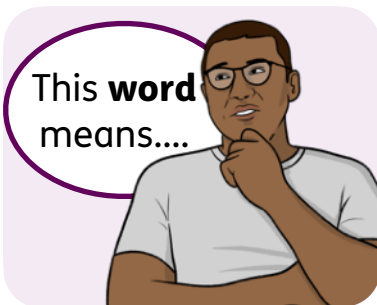
This is an Easy Read version of some information. It may not include all of the information but it will tell you about the important parts.



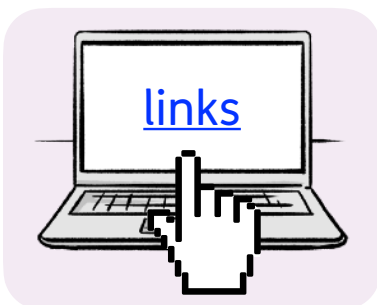
This Easy Read booklet uses easier words and pictures. You may still want help to read it.



Some words are in **bold** - this means the writing is thicker and darker. These are important words in the booklet.



Sometimes if a bold word is hard to understand, we will explain what it means.



[Blue and underlined](#) words show links to websites and email addresses. You can click on these links on a computer.

# What is in this booklet

About this booklet .....	4
What we want to achieve .....	5
Asking what people think .....	6
What we have already done .....	7
What we are going to do .....	10
Find out more .....	16

# About this booklet



Choice is one of the biggest **housing associations** in Northern Ireland.

**Housing associations** are organisations that help people live in good homes that they can afford.



Many of the people who live in our homes are disabled.



This booklet explains how we will make sure we treat these disabled people fairly.

# What we want to achieve



We want to provide more great homes and services for local communities.



We work with the people who live in our houses, so that we understand their needs.



We want Choice to be an organisation that:

- People can trust.



- Always thinks about what the people who live in our houses need.



- Can quickly make changes so that we can meet people's needs.

# Asking what people think

We will listen to what disabled people think. By doing this, we can:



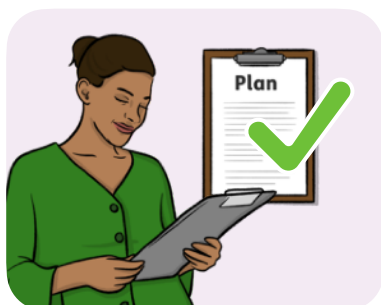
- Find out about what stops disabled people from taking part in their local communities.



- Help our staff think in a good way about disabled people.



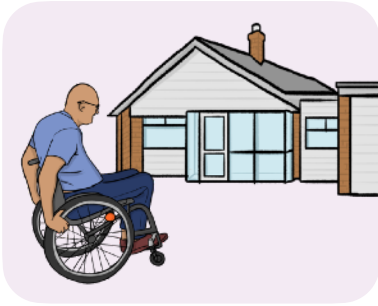
- Look for chances for disabled people to take part in their local communities.



- Check that our plan is right for what people need.

# What we have already done

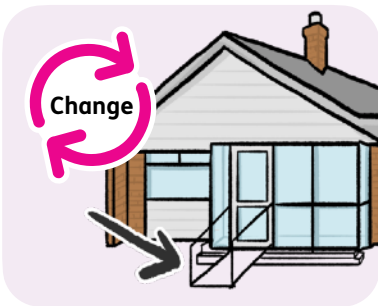
To help support disabled people, we have:



- Provided homes and services.



- Built homes to **Lifetime Homes Standard** - this means the homes can be used by everyone, including disabled people.



- Made changes to homes to make them easier to use and get around.



- Worked to get people money from the Government to help them live independently.

To help support disabled people, we have also:



- Helped people to get involved with us and our activities.



- Included pictures of happy and healthy disabled people in our reports and information booklets.



- Checked all of our projects to make sure they are not unfair to disabled people.

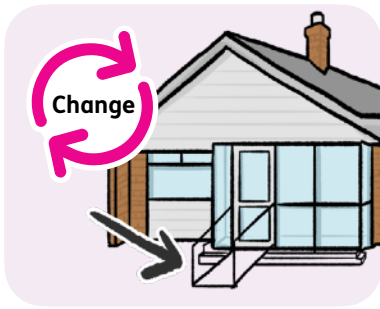


- Given people information in ways that they can understand, like Easy Read.



- Trained staff about disability.





We have also made changes, called **reasonable adjustments**, for disabled staff and people who live in their homes.



These changes help them to take part in work and their local communities.



We are proud of the work that we have done.



But we still have more to do to make sure we are fair to disabled people.

# What we are going to do

To support disabled people to take part in their local communities, we will:



- Check all our **policies** are fair to disabled people.

**Policies** are ways of working.



We will write a report each year explaining how we checked our policies and what we found out.



- Check that we work on the ideas in this plan.

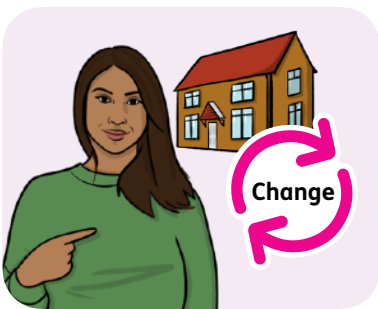


- Write plans for supporting disabled people in all the work we do.

To support disabled people to take part in their local communities, we will also:



- Collect information about disabled people to check that our policies are helping them.



- Make changes to the homes of disabled people, if they need them.



- Ask disabled people if they are happy in their homes, and if they would like anything to change.



- Check how we give out information, to make sure we are not being unfair.

To support disabled people to take part in their local communities, we will also:



- Listen when people ask for information in different ways that are easier to understand, like Easy Read.



- Find the areas of Northern Ireland where disabled people need more homes.



- Check whether our plans to support disabled people are working.



- Train our staff on what they need to do to support disabled people.

To support disabled people to take part in their local communities, we will also:



- Give extra training to some staff, who might need to make choices that affect disabled people.



- Include pictures of disabled people who are happy in and healthy in our information booklets.



- Work with organisations who try to help people think about disabled people in a good way.



- Carry on working with organisations that provide services for disabled people who live in our housing.

To support disabled people to take part in their local communities, we will also:



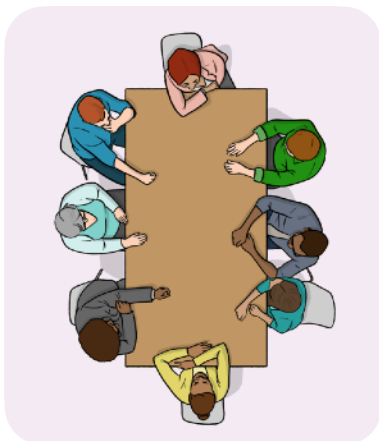
- Make sure our staff know what the law says they must do, to make sure that disabled people are treated fairly.



- Help the companies we work with, like builders, to think about disabled people in a good way.



- Support disabled people who live in our homes to speak up and take part in the local community.



We will support disabled people to take part in the **Board and Tenants' Forum**.

This is a group where people who live in our housing can speak up about issues that affect them.



We will also provide training to disabled people to help them take part in their local community.

# Find out more



You can look at our website here:  
[www.choice-housing.org](http://www.choice-housing.org)

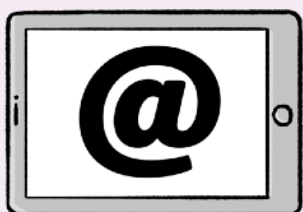
You can contact us by:



- Post:  
Group Director of Governance & Communications  
Choice Housing Ireland Ltd.  
Leslie Morrell House  
37 - 41 May Street  
Belfast  
BT1 4DN



- Phone: 0300 111 2211



- Email:  
[enquiries@choice-housing.org](mailto:enquiries@choice-housing.org)

This Easy Read booklet was produced by [easy-read-online.co.uk](http://easy-read-online.co.uk)  
The booklet includes images licensed from Photosymbols & Shutterstock.